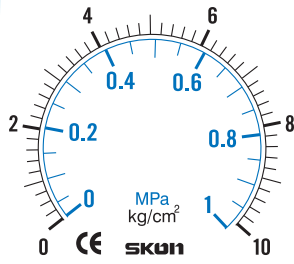


壓力計標準面板刻度

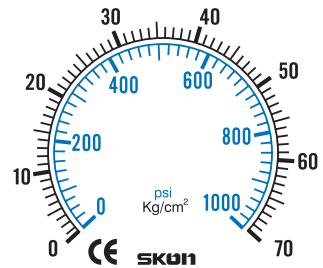
Pressure Gauges Standard Dial Graduations



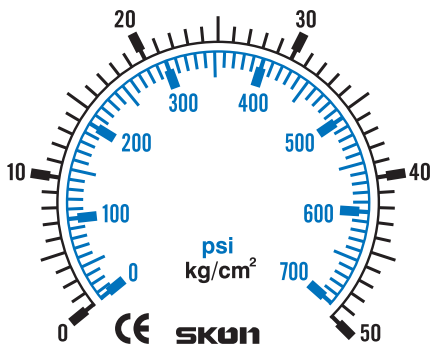
Mpa and kg/cm²
Size: 40mm acc.±2.0%



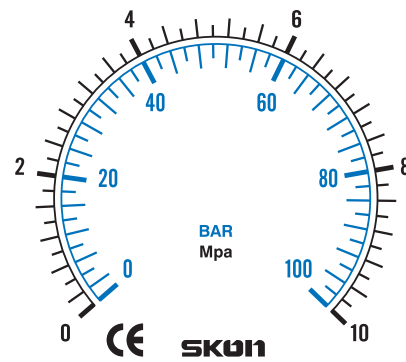
BAR and Mpa
Size: 50mm acc.±2.0%



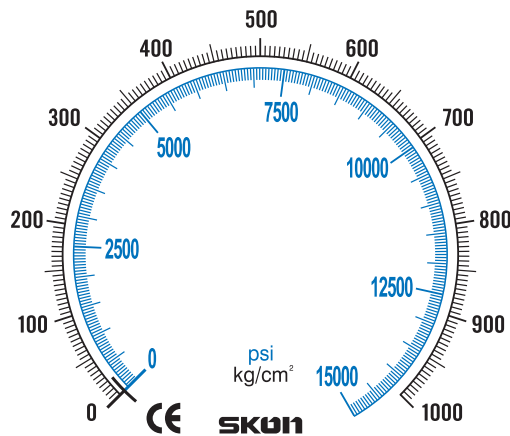
PSI and kg/cm²
Size: 63mm acc.±1.5%



PSI and kg/cm²
Size: 75mm acc.±1.5%



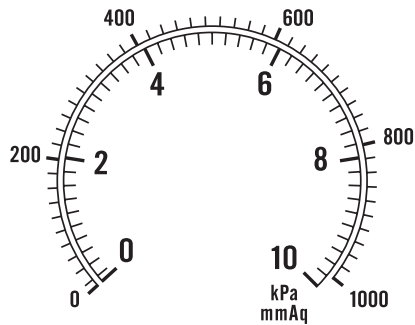
BAR and Mpa
Size: 100mm acc.±1.0%



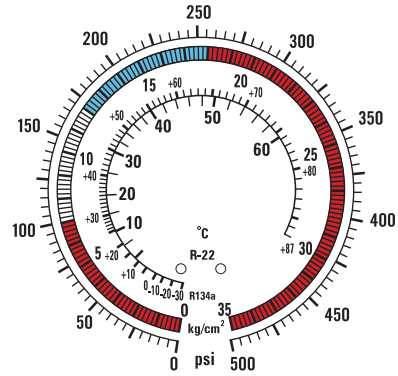
PSI and kg/cm²
Size: 150mm acc.±0.2%

壓力計標準面板刻度

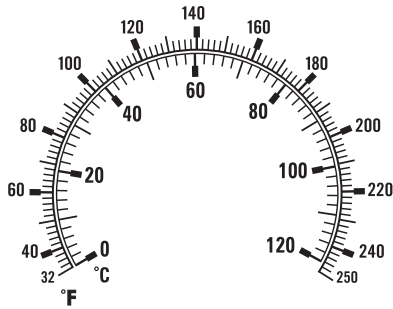
Pressure Gauges Standard Dial Graduations



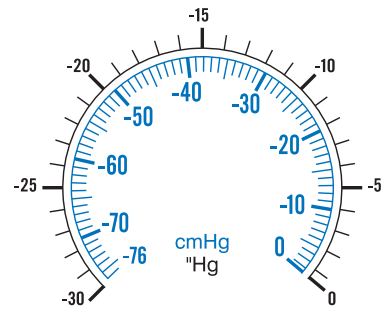
Kpa and mmAq acc.±1.5%
微壓計



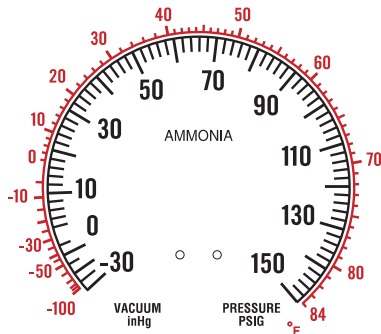
PSI and kg/cm² acc.±1.5%
冷媒壓力計



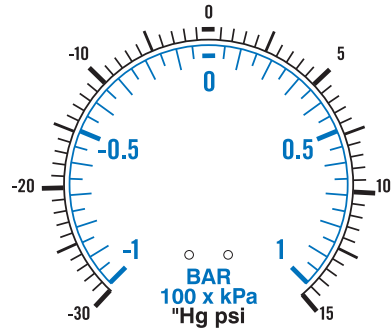
BC and BF acc.±1.5%
溫度計



cmHg and "Hg acc.±1.5%
真空壓力計



inHg and PSI acc.±1.5%
阿摩尼亞壓力計



BAR and PSI acc.±1.5%
聯成計