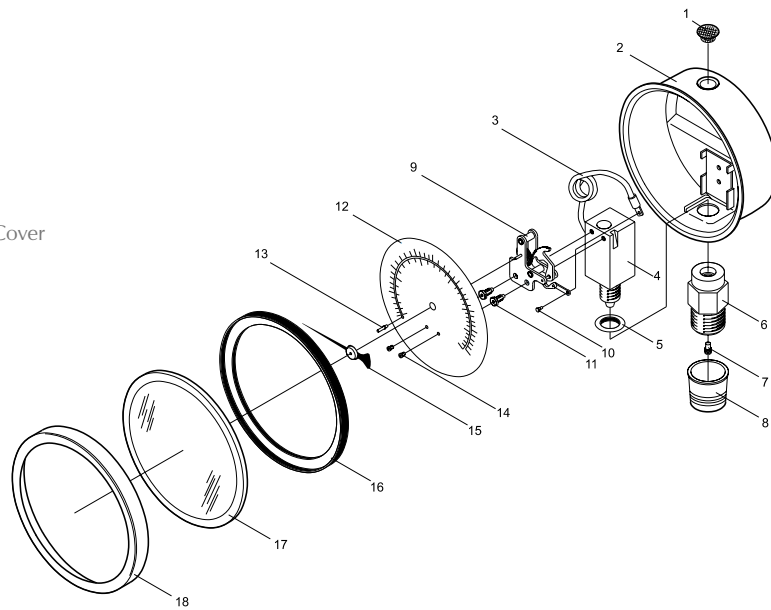


PRESSURE GAUGE EXPLODED DRAWING

1. Safety Device
2. Case
3. Bourdon Tube
4. Brass Socket
5. Oil Valve (Oil seal)
6. Connective Part
7. Shock Reducer
8. Connector Protective Cover
9. Movement
10. Internal Screw
11. Hexagon Screw
12. Dial
13. Stop Pointer
14. Dial Screw
15. Pointer
16. Oil Valve (Oil seal)
17. Window
18. Upper Cap



1. Flange
2. Connector Protective Cover
3. Shock Reducer
4. Connector Part
5. Safety Device
6. Case
7. Oil Valve (Oil seal)
8. Bourdon Tube
9. Brass Socket
10. Movement
11. Internal Screw
12. Hexagon Screw
13. Dial
14. Stop Pointer
15. Dial Screw
16. Pointer
17. Oil Valve (Oil seal)
18. Window
19. Upper Cap

